

# CKD W4GB4 Basic Manifold Chart

W4GB4 Basic Manifold Components. Please specify components from left end to right end with the **cylinder ports facing you**.

NW4G4-EL N Left End Plate(N=NPT Ports)

**\*\*Choose Electrical Option if desired on left side of manifold:**  
**NW4GB4-T10 left side terminal box**  
**NW4G4-T30 left side 25 Pin Sub D connector**

Select Stations and Valve functions per the following. Please note a Maximum number of outputs is (16) - (16) single solenoids, (8) double solenoids, or any variation to total (16) outputs may be used:

**For AC Manifolds**, Bases **MUST** be arranged as follows:

NW4GB4-V1-10N -1-AC	Single Station Manifold Stations 1-6 Only
NW4GB4-V1-10N -2-AC	Single Station Manifold Stations 7-12 Only
NW4GB4-V1-10N -3-AC	Single Station Manifold Stations 13-18 Only
NW4GB4-V2-10N -1-AC	Double Station Manifold Stations 1-6 Only
NW4GB4-V2-10N -2-AC	Double Station Manifold Stations 7-12 Only
NW4GB4-V2-10N -3-AC	Double Station Manifold Stations 13-18 Only

**For DC Manifolds**, Bases can be arranged as required for (16) total outputs:

NW4GB4-V1-10N-DC	Single DC Output Manifold Station
NW4GB4-V2-10N-DC	Double DC Output Manifold Station

Specify Valve Functions as follows: "M7" is pilot air shut off, "5" is AC voltage, "3" is DC voltage



W4GB419  
Spring Return 5/2



W4GB429  
Double Sol. 5/2



W4GB439  
Double Sol., 5/3 CC



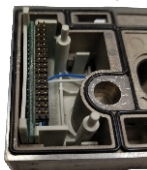
W4GB449  
Double Sol., 5/3 OC

Blank Station Plate May Be specified as:

NW4GB4-MPS-10N 1, 2, or 3 for AC wiring per above Single output  
 NW4GB4-MPD-10N 1, 2, or 3 for AC wiring per above Double output  
 Or, simply order the blanking plate NW4GB4-MP and assemble as required.

**\*\*Choose Electrical Option if desired on Right side of manifold:**  
**NW4GB4-T10R Right side terminal box**  
**NW4G4-T30R Right side 25 Pin Sub D connector**

NW4G4-ER N Right End Plate(N=NPT Ports)



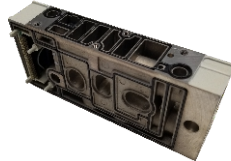
NW4G4-T10R



NW4G4-T30R



NW4GB4-V1-10N



NW4G4-T10



NW4G4-T30

